

Anglican Parish of Germiston Diocese of the Highveld Outreach Projects



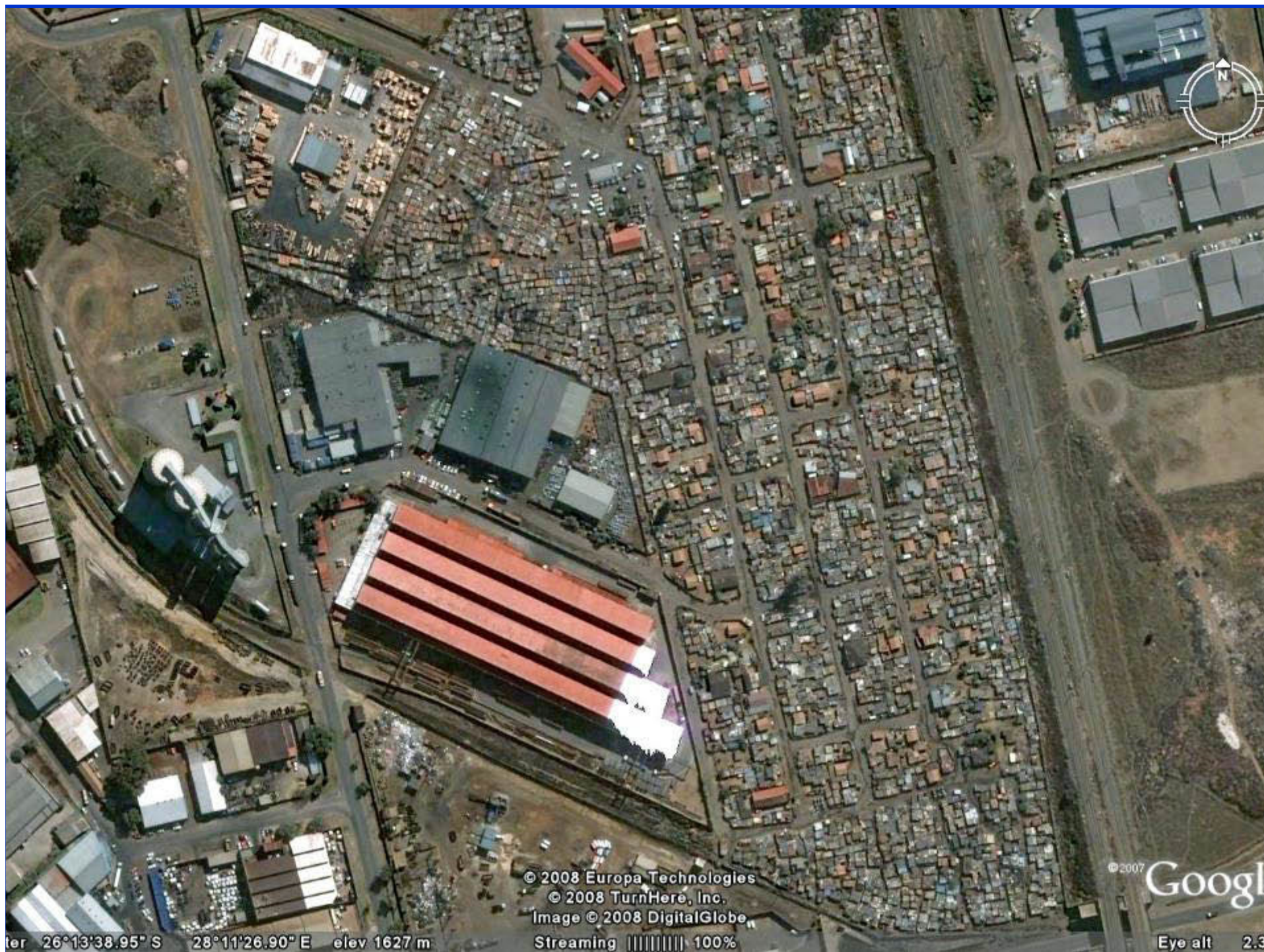
Photographs taken with the permission of the people concerned. Children photographed with permission of the School Governing Body and care givers concerned.

Project description

- **Soup 'gang' & ministry**
- **Bambanani HBC & crèche**
- **Child Advocates**
- **Support- a- child Ekurhuleni school**
- **Good Hope Day care centre**
- **Marathon informal settlement**
- **Diocesan Care Givers debriefing and workshops**
- **Social clubs, Fraternal & private sector support.**

DUKATHOLE INFORMATION

- **Informal settlement surrounded by factories & mining land.**
- **Negative environmental impact**
- **80% unemployment; migrants from neighbouring countries.**
- **High levels of crime, violence prostitution, drugs & alcohol.**



© 2008 Europa Technologies
© 2008 TurnHere, Inc.
Image © 2008 DigitalGlobe
Streaming ||||| 100%

© 2007 Google

Eye alt 2.35

ter 26°13'38.95" S 28°11'26.90" E elev 1627 m

DUKATHOLE INFORMATION

- **Central section: 20-25,000 people on 1.5 kilometres**
- **Majority shacks with no basic amenities; water points & block loos.**
- **Extension 9 : RDP housing with shacks built on; 25,000 people on 3 kilometres.**
- **Good Hope extension 5: 10,000 people in 0.5 kilometres. Two common taps, no sewage.**





BAMBANANI Home Based Care (Support one another)

- 10 Care givers & coordinator Nomsa.
- Around 155 patients + orphans; good liaison with C.A., School, clinic, factories around area.
- Forms the 'Base' for the community from where people can be directed & assisted.
- Some Diocesan funding & parish assistance.



Parish Soup Run & Gang

- Weekly soup, bread & fruit distribution in Dukatole Informal settlement since 2004.



- Work with the Care Givers from Home Based Care group Bambanani, walking to homes with food, other articles and in ministry.





CONTAINER DEVELOPMENT

- 1st container replaced old shack in 2004. Donation from the Rotary refurbished by Akzo Nobel; base office for HBC
- 2nd container donated as crèche 2006; August 2007- 3rd & 4th containers via Rotary for kitchen, counselling office & storeroom.
- Toilet block donated by Axza Nobel; Road closed off by Ekurhuleni Metro





LITTLE ANGELS CRECHE/ DAY **CARE CENTRE**

- At present 28 children: orphans cared for by Granny's & children from child headed households; children of deceased patients.
- Much funding from Diocese for set up.
- Parish developed 2005 & handed back to community in 2012
- Parish still meeting some needs eg gas; toys; clothing & additional food for children





PARISH CHILD ADVOCATES

- *‘Standing for the rights of children’*



SUPPORT A CHILD

- Parish, Ministers Fraternal and Community outreach at Ekurhuleni Primary school started 2004.
- At present 220 orphaned & vulnerable children identified by school, HBC & child advocates on scheme. Others on waiting list to be screened.
- R95 sponsored weekly food parcel distribution at school(+ holidays) Feed back to sponsors.
- Access grants, ID & counselling. Siblings & granny's access to food assistance.







Store Room & Counselling Room at School built November 2007.





GOOD HOPE CRECHE & HBC

- 100 orphaned & vulnerable children. HBC & C.A. office in separate adjoining house.
- Shacks replaced December 2008; local community funding
- 2 teachers & cook stipends paid; food subsidized
- Health Department cooperation
- Many siblings of school children







MARATHON INFORMAL SETTLEMENT

- Existing church building in use on mining ground to be used as a crèche for OVC & safe park.
- Estimated 50,000 people; many immigrants; 0.5 kilometres from city centre. No sewage, water on outskirts only.
- Local council & counsellor involvement; funding secured.





Care Givers Eucharist and Workshops

- Parish hosts monthly outreach meeting for Care Givers on East Rand; debriefing sessions and workshops take place before the Eucharist; HIV/AIDS focus; started 2003
- Venue for Diocesan workshops on HIV/AIDS Counselling, Home Based Care, Care of the Caregivers and Project Management.



PROJECT ACHIEVEMENTS

- Team work - allowing churches, social clubs, community, schools & industry to all work for upliftment of people within the informal settlement.
- Sustainability in services - in the 6th year without missing a week.
- School & other feeding has improved both the nutrition & well being of persons.
- 'Buy in' means financial sustainability is shared.

PROJECT ACHIEVEMENTS

- Drawing in & empowering/training people from the settlements to work within the projects and provide 'career paths' . (Crèche teachers, cooks, child advocates, care givers, painters, general workmen)
- The local community get to know the team & ask for help/advice; building trust.
- Ward counsellor on Boards of projects; Local Council support.

LESSONS LEARNED

- Good feedback & reports on projects to donors is essential to secure future funding.
- 'Team' get together for reporting & sharing are essential.
- Report back regularly to Parish to sustain support & recruit people.
- One group cannot 'own' the projects; allow the vision to include others giftedness & ideas.
- Open separate bank account for Social projects & keep good transparent records.

COMMUNITY INVOLVEMENT

- Students from private schools do community service; gifts for granny's & Easter eggs
- Local service clubs – Rotary & Lions; sports clubs, baby clinics assist in many ways – materially & financially.
- Other churches belonging to Fraternal assist; confirmation candidates do service in projects as part of course.





